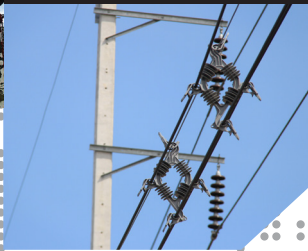




THAILAND

**CORPORATE
PROFILE**





The Connection You Can Count On[®]

ENERGY

- TRANSMISSION
- DISTRIBUTION
- SUBSTATION
- SOLAR

COMMUNICATIONS

SPECIAL INDUSTRIES

INSPECTION SERVICES

THE BEGINNING...



THOMAS F. PETERSON
PLP FOUNDER

In 1947, Thomas F. Peterson, an electrical engineer in the USA, came up with an innovative idea that became the catalyst to forming a worldwide organization that would ultimately grow into an international company with operations in twenty countries.

Responding to a customer's concern about conductors breaking at the point of support, Peterson thought of preforming rods into a helix having an inside diameter somewhat smaller than the outside diameter of the conductor.

The theory was that helically preformed rods, when applied over conductor, could provide a secure fit without end clamps, as well as 'armor' to protect the conductor from abrasion and fatigue at points of attachment. This idea proved successful and the product was called the PREFORMED™ Armor Rod, patented in 1954. Armor Rods offer superior reinforcement and protection advantages over conventional wire and clamping methods. The helical concept then grew into a complete line of products for the electric power utility and communications industries.

Recognized branded products like the GUY-GRIP® Dead-End revolutionized pole guying, and the ARMOR-GRIP® Suspension created a new standard of excellence for transmission conductor support systems. Peterson went on to patent 28 additional products for Preformed Line Products, bringing to fruition a large number of industry 'firsts' and serving customers needs with effective solutions.

Inventiveness, integrity, and foresight are the foundation of Preformed Line Products and its people continue to build the company with new product ideas for the industries it serves. PLP's patented products now serve the electric power utility, communications, cable and broadband service providers as well as other specialized niche markets. From PLP's early days to present, and

looking forward to the future, this dedication to innovation is what has made Preformed Line Products a recognized global leader. PLP is a diversified global corporation



PLP'S FIRST HEADQUARTERS



"By capitalizing on the unique talents provided by a worldwide organization, we are able to continuously grow all our operations by providing customers in all our markets with affordable, high-quality products, delivered where needed, when needed."

Robert G. Ruhlman
Chairman and Chief Executive Officer



TODAY...

that provides infrastructure solutions to the energy, communications, renewable power, transit, marine, and agriculture industries, among others. PLP delivers high-quality, dependable solutions and market-leading customer service through a global network of 25 primary facilities and more than 3,000 employees.

PLP maintains wholly-owned subsidiaries in Australia, Austria, Argentina, Brazil, Canada, China, Colombia, Czech Republic, France, Great Britain, Indonesia, Malaysia, Mexico, New Zealand, Poland, South Africa, Spain, Vietnam, India and Thailand.

These international operations work together to provide PLP with outstanding global market coverage and customer service in more than 140 countries around the world. In addition to manufacturing traditional products, PLP's operations provide products uniquely suited to meet the needs of its customers. PLP's commitment to technical innovation, along with outstanding product performance and exceptional customer service, are the hallmarks of its world-wide capabilities.



PLP'S GLOBAL HEADQUARTERS TODAY



PLP THAILAND

PLP Thailand markets its products via a direct Sales Team delivering added value to all customers through our expertise and unparalleled customer support.



Preformed Line Products Company (PLP), together with its subsidiaries, designs and manufactures products and systems used in the construction and maintenance of overhead and underground networks for the energy, telecommunication, cable operators, and information industries worldwide. PLP is recognized as a leading designer and manufacturer of line hardware fittings and accessories with specialist expertise in designing strings.

PLP Thailand is a wholly-owned subsidiary of Preformed Line Products, a diversified global corporation headquartered in the United States (Cleveland, Ohio) since 1947. PLP Thailand is ISO 9001 & ISO 14000 version 2015 certified and is located in the tax free zone of Lardkrabang Industrial Estate approximately 15 km from Bangkok's Suvarnabhumi International Airport.

PLP acquired Dulmison in December 2009 and has since integrated the existing operations of PLP Asia and former Tyco Electronics Dulmison (Thailand) into one location. PLP Thailand now has approximately 300 employees serving the Power Transmission, Power Distribution, Substation, Communication, Alternative Energy (Solar), and System Enclosure markets. The direct market coverage includes Thailand, Vietnam, Laos, Cambodia, Myanmar, India, Sri Lanka, Pakistan, Bangladesh, Nepal, Taiwan, and part of Japan.

PLP Thailand has designed and supplied complete insulator assemblies and conductor accessories to Electric Utilities in many countries throughout Asia, the Middle East, Europe, and various contractors worldwide. In supplying these contracts, PLP Thailand has gained an enviable reputation for reliable high-quality products and is approved by the Electricity Generating Authority of Thailand (EGAT) plus other Electricity Authorities globally for systems up to 500 kV.

PLP Thailand markets its products via a direct Sales Team delivering added value to all customers through our expertise and unparalleled customer support. Our in-house capabilities includes Engineering, Manufacturing, Testing, Sales, Procurement, Logistics, and Administration.

PLP Thailand manufactures to many standards including, BS3288 Part 1, BS3288 Part 2 2002, BS IEC 61284, AS1154.1, AS1154.2, AS1154.3, ANSI C39.2 1983, NEMA CC1 1984, IEC 61854 1998 and ASTM-A153-82 (revised 1984).

With the mix of group competency, numerous facilities, and the combined strength of R&D it provides, PLP Thailand has the complete product and services portfolio to offer to our customers. The manufacture of our products is supported by a proven design engineering team as well as modern CNC technologies, robotics, high pressure die casting, plastic injection moulding, tooling room, and a well-equipped testing laboratory. With lean and modern manufacturing technologies, we can react promptly to our customer's requirement, keeping lead times to minimum.



Surapol Pichayajittipong
Managing Director
PLP Thailand

PLP THAILAND PRODUCT LINES INCLUDE LINE HARDWARE FITTINGS AND ACCESSORIES FOR THE FOLLOWING:

- Power Transmission Networks
- Power Distribution Networks
- Substations
- Communication Networks
- Solar

CAPABILITIES INCLUDE:

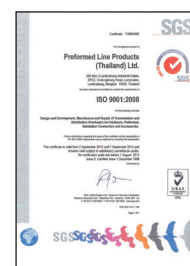
- Wire Forming
- Forging
- Aluminium and Steel Welding (utilizing robotics)
- Aluminium Casting: Gravity and Pressure Die Cast (PDC)
- Plastic Injection Moulding
- Plastic Extrusion
- Hardware Machining
- CNC and Plasma Plate Cutting
- Pressing
- Stamping
- Tube Bending
- Assembly
- Tool Design and Manufacturing
- Testing

ISO CERTIFICATIONS AND ACCREDITATIONS; AND COMMITTEES

- ISO 14001:2015
- ISO 9001:2015



ISO 14001:2015



ISO 9001:2015

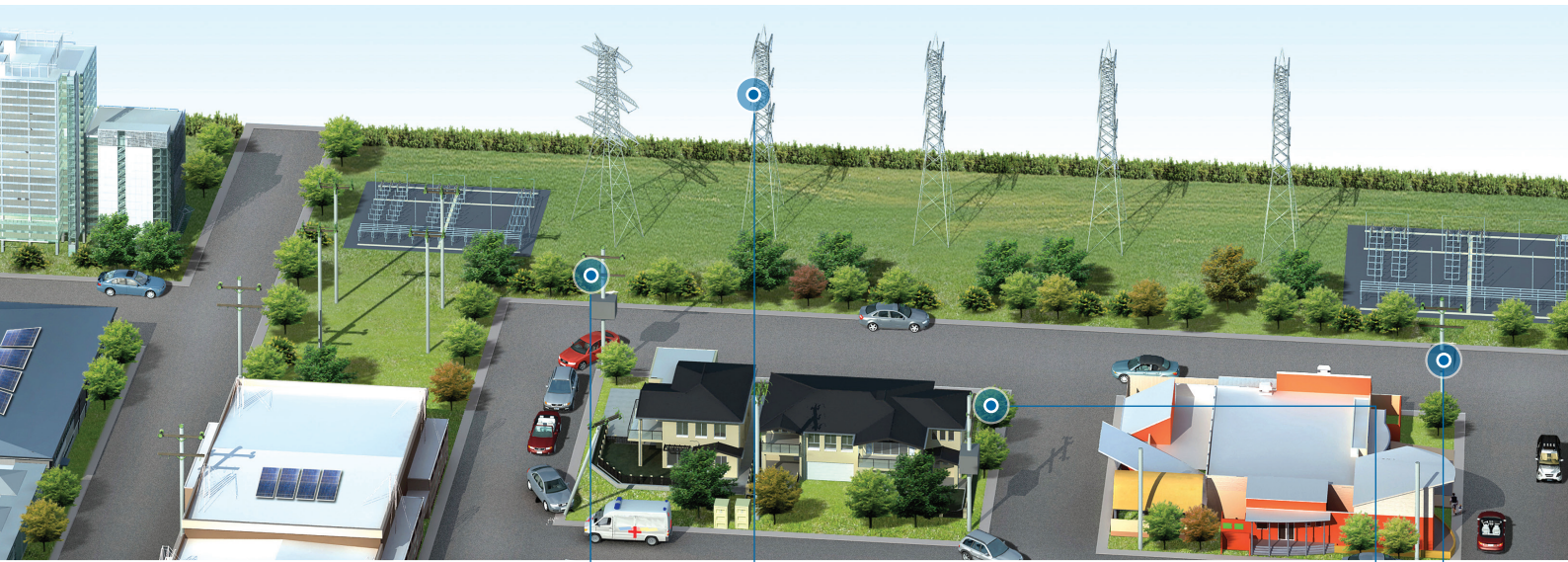
An effective product supply chain makes sure that our product moves from origin to installation without unnecessary delays. A local customer service center offers a single point of contact and support. By combining local knowledge with world-class research, product development, and manufacturing capabilities, we set ever-higher standards of performance and user convenience. We also work very closely with our customers to pioneer the development for new products for their specific requirements.

Our engineering team has world-renowned expertise in conductor vibration control, and we manufacture a leading range of Spacers, Spacer Dampers for Twin, Triple, and Quad conductor configurations. Spacer Dampers for larger bundles can also be supplied. PLP also has a complete range of Stockbridge Vibration Dampers.



PLP MARKETS

Preformed Line Products has been supplying products to the electric power and communications industries for more than 70 years.



DISTRIBUTION

Preformed Line Products has been providing innovative product and service solutions to the electric power utility industry since 1947. PLP offers solutions for supporting, protecting, terminating, and splicing distribution lines.

TRANSMISSION

Preformed Line Products offers innovative products for overhead transmission lines. The reliability of our transmission products combined with our knowledgeable sales team and technical support services, make Preformed Line Products the connection you can count on.

SPECIAL INDUSTRIES

Preformed Line Products offers a broad range of products designed for specialized industries such as Tower & Antenna, Elevator, Metal Buildings, Arborist & Vineyard, Farm & Ranch, Rail and Urethane.

COMMUNICATIONS

Products that perform better, last longer, and are easier to install - you can count on Preformed Line Products to provide high-quality solutions that meet the rigorous demands of today's modern communications networks.



SUBSTATION

With in-house manufacturing, engineering and testing capabilities, Preformed Line Products is able to supply all your substation needs whether you need only one fitting, an entire rigid, or a flexible bus system.

PLP's new range of Transformers, Switches and Disconnectors are the way of the future for distribution utility and private sector. Superior engineering performance characteristics combined with sound economic justification and quantifiable environmental benefits make these the products of tomorrow.

SOLAR

Dedication to ongoing application & engineering of solar technology will drive the future innovations in the power generation industry and provide a way to reduce dependence on fossil fuels.

With our manufacturing advantage, PLP is committed to pushing the boundaries and applying solar technologies that provide renewable energy solutions at the leading edge.

ENERGY TRANSMISSION

PLP Transmission products cover the functions of termination, suspension, support, splicing, connectors and protection with a wide range of conductor and line hardware fittings and accessories.



PLP is a leading manufacturer and designer of string hardware and accessories. PLP has supplied complete packages of power line hardware for transmission networks throughout the world.

These are lines covering large distances with individual geographic and logistical needs and PLP has always proved its worth as an on-time reliable supplier.

PLP's technical background and up-to-date design software and hardware are capable of meeting the challenges of tomorrow.

INSULATOR STRING HARDWARE

- Suspension/Tension
- Compression Fittings

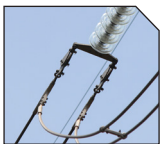
CONDUCTOR ACCESSORIES

- Spacer Damper
- Rigid Spacer
- Vibration Damper
- Spiral Vibration Damper
- Mid-Span Joint
- Repair Sleeve
- Air Warning Sphere
- Wildlife Protection & Deterrent

OPGW & ADSS STRING HARDWARE

PRODUCT FOR SPECIAL APPLICATION

- Hardware for High Temperature Conductors
- Hardware for Extra Long Span Application



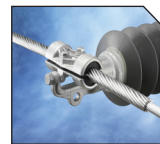
String Hardware



Compression Fittings



Suspension Fittings



CUSHION-GRIP® Supports



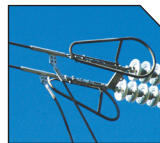
PREFORMED™ Armor Rods



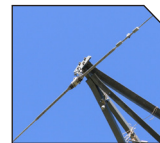
Vibration Dampers



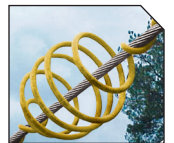
Spacer Dampers



Protections



OPGW String Hardware



Wildlife Protection

THERMOLIGN® Hardware for High Operating Temperatures Innovative solutions from Preformed Line Products for transmission conductors above 200°C.



Preformed Line Products has been involved with the design, testing, and production of hardware and accessories for High Temperature Low Sag Conductors (HTLS) since 1999. PLP registered the brand name THERMOLIGN® to represent products that are intended for use on new HTLS conductor technologies that have maximum continuous operating temperatures ranging from 180°C to 250°C. THERMOLIGN® products have been designed and thoroughly tested both in the laboratory and in the field to meet the unique requirements of high temperature operation.

The unique nature of the materials used in the core of many of the HTLS conductors require the extra protection provided by the THERMOLIGN® hardware designs. Both in the U.S. World Headquarters and subsidiaries throughout the world, PLP has experienced engineering personnel and world class laboratory facilities to assure that the THERMOLIGN® products meet industry specifications and the special requirements for high temperature operation.

SOLUTIONS FOR HTLS CONDUCTORS

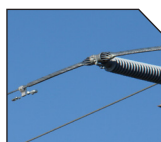
- ACCC®
- ACFR
- ACSS
- ACCR
- HVCRC
- GAP Conductor
- INVAR Conductor
- The other HTLS Conductors

PRODUCTS

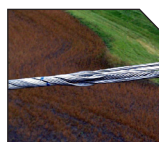
- THERMOLIGN® Suspensions
- THERMOLIGN® Support Clamps
- THERMOLIGN® Formed-Wire Dead-ends
- Conductor Splices
- Vibration Dampers
- Spacers Dampers
- Spacers



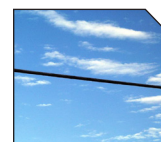
THERMOLIGN®
Suspensions



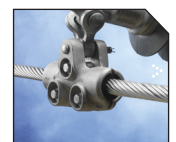
THERMOLIGN®
Supports



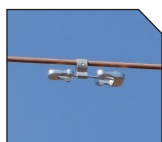
THERMOLIGN®
Formed-Wire Dead-ends



THERMOLIGN®
Splices



CUSHION-GRIP®
Suspensions



Vibration Dampers



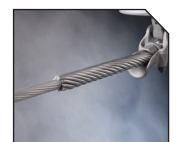
Spacer Dampers



Spacers



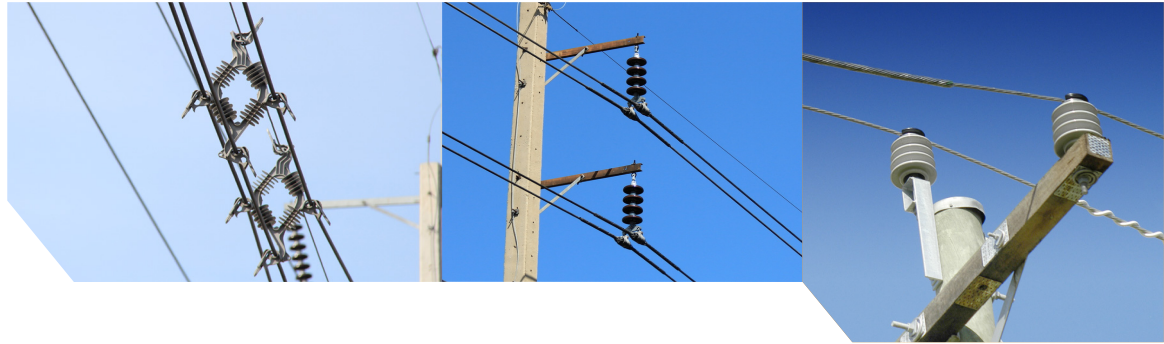
String Hardware



PREFORMED™
Armor Rods

ENERGY DISTRIBUTION

To satisfy requirements of energy authorities, PLP manufactures and stocks an extensive range of conductor fittings and accessories.



Preformed Line Products manufactures fittings for bare and insulated overhead cabling for aluminium and copper systems for the power distribution sector and for rail networks.

Products cover the functions of termination, suspension, connection and protection along with a wide range of line hardware fittings and accessories. To satisfy requirements of energy authorities, PLP manufactures and stocks an extensive range of conductor fittings and accessories.

In addition with PLP's engineering expertise, skills and resources, PLP can effectively design, develop and produce fittings to overcome problems that face the customer in the field.

DEAD-END
PREFORMED™
 Bolted Type
 Compression type

SUSPENSIONS
PREFORMED™
 Bolted Type
ARMOR-GRIP®
CUSHION-GRIP®

ABC SYSTEMS

CONDUCTOR ACCESSORIES
 Mid-Span Joint
 Armor Rods
 Spiral Vibration Damper

MVCC PRODUCTS
 Cable Spacer
 Plastic Ties
 Semi-conductive Ties
 Coated Ties

INSULATORS
INSULIGN® Polymer Insulators

POLE LINE HARDWARE
 Round Pole
 Concrete Beam Pole
 Tangent Brackets



Distribution-Grip
Dead-end



GUY-GRIP®
Dead-end



Cable Spacer



ARMOR-GRIP®
SUSPENSION (AGS)



CUSHION-GRIP®
SUSPENSION (CGS)



Splice Shunt



Plastic &
Semi-conductive Ties



Helical Rod Spacer



Spiral Vibration
Damper (SVD)



INSULIGN® Polymer
Insulators

Customers can be well assured the manufacturing quality and engineering backup synonymous with PLP products applies equally to substations.



POWERFORMED™ BUS FITTINGS

- BUSLIGN Bolted
- BUSLIGN Welded
- BUSLIGN Compression
- SUBLIGN Bolted
- SUBLIGN Welded
- SUBLIGN Compression

OVERHEAD & LANDING SPAN FITTINGS

POWERFORMED™ Substation Systems

POWERFORMED™ Substation systems are a product of the company's global engineering design, testing, and manufacturing strengths. Within the POWERFORMED™ range are two distinct families of connectors, clamps and hardware for substation products, called BUSLIGN and SUBLIGN.

PLP has proven over many years of reliable in-service performance at voltages up to 500 kV, the intellectual property and designs that underpin POWERFORMED™ fittings are drawn from as far afield as Australia, New Zealand, Poland, South Africa, and Thailand.

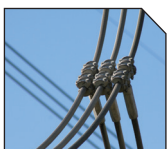
SubCon Electrical Fittings GmbH, a market leader in the design and manufacture of highly engineered substation connector systems was acquired by Preformed Line Products in 2019. SubCon's expertise in high-voltage AC and DC systems, including voltage levels up to and exceeding 1,000 kV, has further enhanced PLP's reputation as a premier supplier of hardware and systems for the global substation market.

BUSLIGN: Substation Fittings for Tubular Aluminium Busbars

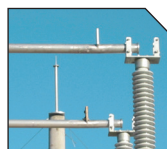
POWERFORMED™ BUSLIGN aluminium substation fittings includes both bolted, and welded solutions. Designed to be used to create high current tubular aluminium busbar systems in high voltage AC and DC substations, BUSLIGN fittings are available to suit both SPS (Standard Pipe Size) and Metric aluminium busbar tubes. Conservatively designed for long and reliable in-service life, PLP's BUSLIGN range represents some of the latest thinking in power engineering product design, backed by mechanical, heat cycle, Corona and RIV short circuit testing at up to 63kA/1s.

SUBLIGN: Substation Fittings for Aluminium Conductors

POWERFORMED™ SUBLIGN flexible conductor fittings bolted, welded and compression fitting solutions for AAC, AAAC, ACSR and ACAR flexible aluminium conductors. With some of the most unique and flexible designs available, installation is fast, easy and most importantly reliable for critical substation assets. Backed by extensive testing to NEMA, ANSI and IEC standards, SUBLIGN connectors are the low risk choice for substation assets.



Bolted Connectors



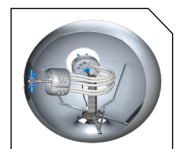
Supports



Termination and Lugs



Busbar End Caps



Special HVDC Connector



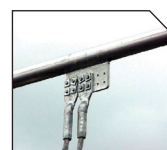
Expansion Terminal Connector



Earthing



Copper Clamp



Palms / Flags



Special Connector

ENERGY SOLAR

PLP's value proposition focuses on maximizing the industry's long-term viability, both financially and environmentally.

PLP provides innovative mounting solutions for any PV solar application including commercial, industrial, government, utility, and residential applications. PLP's product line sets the standard for the solar industry in terms of high strength and ease of installation.

In addition, PLP provides consultation on system design and installation. We deliver added value to our customers through technical expertise and unparalleled customer support.



Mounting Kits:

PLP's mounting kits offer improved strength, longer life and are easier to install. We offer field proven solutions for securing any solar module in a variety of applications for utility scale, commercial, residential, government and industrial markets. Installers from the Asia Pacific region rely on the strength and hassle-free quick assembly of our PV mounting structures.

High-Strength and Durable Design:

Engineered rail profile for maximum strength to weight ratio
High-strength aluminium alloy structural and rail construction
All fastening hardware is made of durable stainless steel.

Reduced Installation Time and Costs:

- Clamping system designed for fast installation and easy access
- Tighter module spacing offers higher density
- Greater span lengths reduce roof penetrations and mounting components
- Mounting Kits offer all hardware components in a single part number

POWER RAIL™

POWER RAIL Clamping PV mounting system is designed with the professional PV solar installer in mind. The rails are engineered to allow greater spans between supports, thus minimizing roof penetrations, reducing installation time, and lowering overall costs.

POWER RAIL is allowing for fewer field splices and longer span lengths. The end result is fewer hardware components and reduced assembly thus saving the installer both valuable time and money.

Various Clamps Type for each purpose:

- Poly Crystalline Solar Panel
- Thin Film Solar Panel
- KlipLok Clamp for Metal Sheet Roof
- Tile Bracket for Tile for Pitched Roof



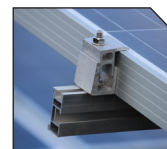
POWER RAIL



End Clamp



Mid Clamp



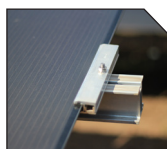
Adjustable Clamp



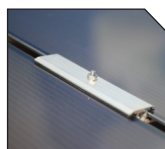
Tile Bracket



POWER PEAK
Steel Structure



End Clamp for
Thin Film Panel



Mid Clamp for
Thin Film Panel



KlipLok Clamp for
Metal Sheet Roof



L-Bracket

With reliable products, dedicated services, and professional experience, PLP can provide effective solutions, making the choice for solar energy a worthwhile investment.



POWER PEAK™ PV Mounting System:

The POWER PEAK PV mounting system is designed for larger scale ground mount installations that require faster build rates. Combining high strength steel attachment components, lightweight module rails and the Lock-in-Place RAD™ Clamp, the POWER PEAK™ provides a fast and secure mounting structure for most PV modules.

POWER PEAK PV mounting structures are optimized to site-specific conditions and assemble over pile driven galvanized steel beams. Component attachments feature built-in field adjustments for post misalignment and include captive bolts. The single row, vertical post design greatly reduces the number of ground penetrations while providing increased ground clearance options.

The POWER PEAK PV mounting system assembles without any lifting equipment or machinery and pre-assembled components significantly reduce installation time and labor. Structures are specified and manufactured to match module string counts to reduce wiring time and materials. The unique module rails feature built in wire channels for a professional appearance.

ROOF MOUNTS SOLUTIONS

- Standard Roof Mounts
- Ballasted Roof Mounts
- Power Tube CRS™ (Commercial Racking System) Canopy

GROUND MOUNTS SOLUTIONS

- POWER PEAK Ground Mounts
- Large Ground Mounts
- Double Post Mounts
- Single Post Mounts
- Carports



Roof Mounts for Residents



Roof Mounts for Factories



Ballasted POWER RAIL™ Mounts



Double Post Molunts



Ballasted Roof Mounts



POWER PEAK Ground Mounts



Large Ground Mounts



Single Post Mounts



Single Post Mounts Concrete piles



Carports

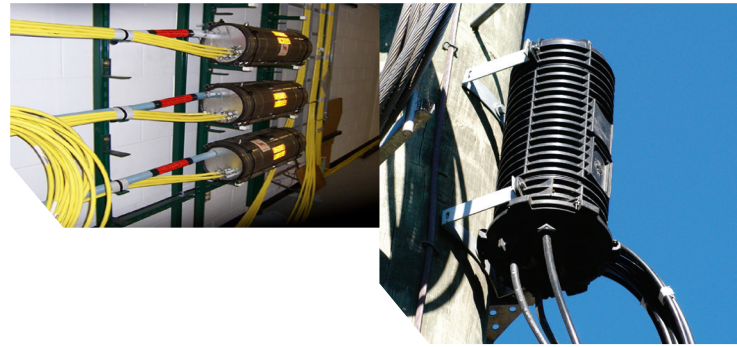
COMMUNICATIONS

If reliable communications are essential to the success of your business or customers, trust PLP to keep your lines secure.

Committed to providing the telecommunications industries with superior products for supporting and protecting their lines.

As the originator and inventor of dead-ends, suspensions, supports and splice closures for OPGW and ADSS cable, PLP maintains a leadership role in the industry by continually developing, improving and testing these products.

If reliable communications are essential to the success of your business or customers, trust PLP to keep your lines secure.



FIBER OPTICS

COYOTE® Closures & Splice Cases
FIBERLIGN®

- Hardware for OPGW
- Hardware for ADSS

Accessories for OPGW/ADSS

Hardware for Aerial FTTP Application

COPPER PRODUCTS

ARMADILLO® Closure
REDDI™ Closures

COYOTE
FIBER OPTICS

ARMADILLO®

DEMARCATIION PRODUCTS

Cable Demarcation Enclosure

COYOTE® Access Solutions™ Products

FIBERLIGN®



COYOTE® In-Line
RUNT Closure



COYOTE®
Dome Closure



COYOTE®
Terminal Closures



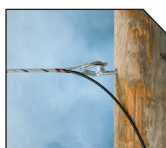
COYOTE® Stainless
Steel OPGW Closure



COYOTE®
Fiber Wall Plates



COYOTE®
Ground Level
Closure (GLC)



FIBERLIGN®
Lite Tension Dead-End
for ADSS



FIBERLIGN®
Aluminium
Suspension/Support
for ADSS

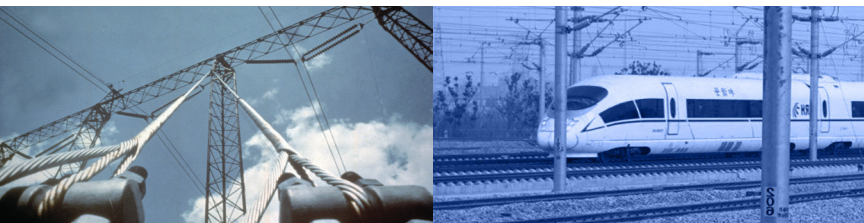


COYOTE®
Multi-Purpose
Closure



SLACKLOOP®
CENTER-LOCK
Storage

Preformed Line Products offers a broad range of products designed for specialized industries such as Tower & Antenna, Elevator, Metal Buildings, Arborist & Vineyard, Farm & Ranch, Rail, and Urethane.



TOWER & ANTENNA

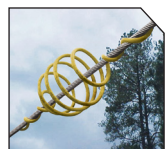
PLP provides trusted solutions to the Tower and Antenna industries in the form of dead-ends, wildlife protection, and repair hardware. All antenna dead-ends are manufactured to 100% rated breaking strength to ensure that PLP products remain the industry standard. Accessories like vibration dampers and bird diverters give you peace of mind by ensuring your structures and wildlife stay safe for years to come.

ELEVATOR

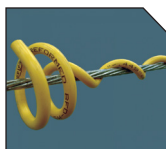
Reeving Splices were designed in conjunction with The Otis Elevator Company as an aid to simplify marrying wire ropes during elevator repairs. Reeving splices hold galvanized steel cables in place, allowing old elevator wire ropes to be removed and replaced.

METAL BUILDINGS

PLP developed superior cross bracing solutions for the metal building industry. The BRACE-GRIP® Dead-End system provides 100% of the published rated breaking strength of the strand for which it is designed, while remaining lightweight and easy-to-install and cost effective.



SWAN-FLIGHT™
Diverter



BIRD-FLIGHT™
Diverter



BRACE-GRIP® Dead-end for
Strand Systems



BRACE-GRIP® Dead-end for
Rod Systems



Post Wire
Stretcher



VINE-LINE®
Connector



TREE-GRIP™
Dead-end



Reeving Splice



3D POST™
Property Markers
Patented



RANCHMATE
Large Twist Ends
Barbed Wire

ARBORIST & VINEYARDS

Cablings hardware and TREE-GRIP™ Dead-Ends make tree cabling installation and repair easier than ever. Get the job done faster without worrying about breakage with hardware that's designed to be installed in minutes. PLP also offers vineyard trellising connectors that increase the rated breaking strength of a trellis thus producing higher crop yields.

FARM & RANCH

The farm & ranch product line introduced the world to innovative fencing products that are changing the way wire fences are built and repaired. These products enables farmers and ranchers to construct and mend wire fences like utility linemen have built and fixed overhead conductor lines for decades. proven technology for cable anchoring

RAILWAYS

PLP's proven technology for cable anchoring and control hardware systems are used globally for railways as the preferred choice with superior reliability and designs to thrive in harsh environments. PLP's fiber optic hardware and splice cases make it easy to connect the modern rail systems with the latest fiber technology.

URETHANE SOLUTIONS

PLP provides stock and customized urethane solutions for mining, rail, and transit industries. A wide selection of urethane casting systems is designed to meet your needs, whether you're looking for a solution with excellent tensile strength, fast curing time, perfect clarity or low water absorption.

INSPECTION SERVICES

PLP provides safe and reliable drone inspection services for utility assets including transmission and distribution power lines, substations, and generation facilities.

AERIAL DRONE INSPECTIONS FOR ELECTRIC UTILITIES

By utilizing PLP's 70+ years of industry experience, our Inspection Services solution provides the expertise and knowledge needed to capture, analyze, and assess the condition of utility assets, including conductors, insulators, hardware, poles, towers, and rights of way

- 70+ years of electric power utility experience
- World renowned designer and manufacturer of utility system components
- In house, state of the art research and testing facility
- Global team of industry engineers and subject matter experts



INSPECTIONS BY THE INDUSTRY EXPERTS

IMAGE COLLECTION

PLP Inspection Services utilizes unmanned aerial vehicles equipped with infrared and electro-optical cameras to capture asset images and survey information

FIELD ENGINEER

PLP Inspection Services utilizes unmanned aerial vehicles equipped with infrared and electro-optical cameras to capture asset images and survey information

GIS SERVICES

Data is uploaded to PLP's secure servers, and a geographic information specialist maps the results, assigning images to appropriate structures within the system

DATA ANALYSIS

Our in-house, industry-trained data inspection engineers work alongside PLP's knowledgeable subject matter experts to analyze customer data

ACTIONABLE REPORTING

Every primary system component is given a rating so the utility can quickly prioritize potential reliability concerns and set work orders.



Drone



Roof Mounts for Factories

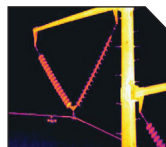
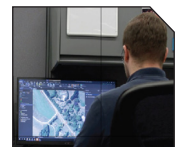


Image Collection



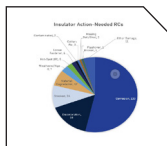
Field Engineer



GIS Services



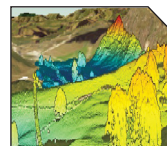
Data Analysis



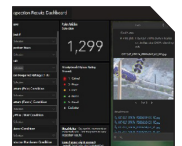
Actionable Reporting



Data Management And Analysis



Lidar Services



GIS-Mapped Results Dashboard

LABORATORIES & SERVICES



PLP provides laboratory testing and technical services to support customer needs and solve their most difficult problems.



A cornerstone of PLP's success has been the ability to anticipate customer needs and solve those needs quickly and effectively. One such investment is the impressive Research & Testing Laboratory, which is located at PLP's global headquarters in the United States. This state-of-the-art facility can simulate the wide range of environmental conditions that products may experience in the field.

PLP THAILAND LABORATORY & SERVICES

LABORATORY SERVICES

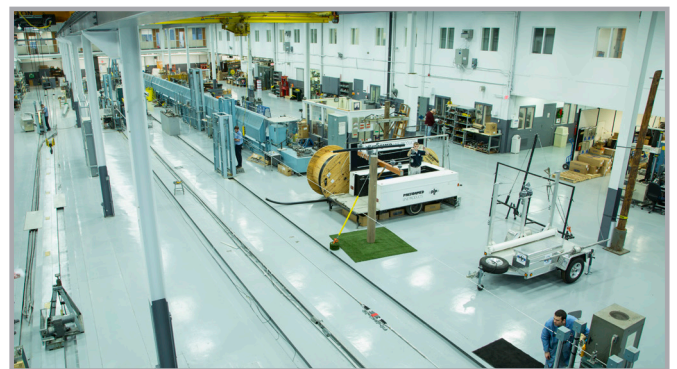
- Vibration Damper Testing
- Spacer Damper Testing
- Mechanical Tension Test Rig
- Long Bed Tensile Machines
- Heat Cycle Testing // Temperature Rise Testing
- Optical Emission Spectroscopy Analysis (OES)
- Radiographic Inspection
- Magnetic Particle Inspection (MPI)
- Magnetic Power Loss Testing
- Resistivity Testing
- Hardness Testing
- Coating Thickness Testing

FIELD VIBRATION TEST

- Vibration Recorders
- Field Vibration Test Report
- Vibration Simulation and Analysis Report

PLP CORPORATE LABORATORY SERVICE

- Vibration Span Testing
- Spacer Damper Testing
- Electrical Testing
- Microstructure Analysis
- Environmental Aging
- UV Aging



THAILAND

**CORPORATE
PROFILE**



Preformed Line Products (Thailand) Ltd.
296 Moo 4, Lardkrabang Industrial Estate EPZ3, Chalongkrung Road,
Lumpratew, Lardkrabang, Bangkok 10520, Thailand

Telephone: +662.739.4026
Fax: +612.326.0564
INFO.TH@PLP.COM
PLP.COM/TH

© 2024 Preformed Line Products
Printed in Thailand
GL-ML-1074
10-24-5M

VISIT OUR WEBSITE



The Connection You Can Count On®